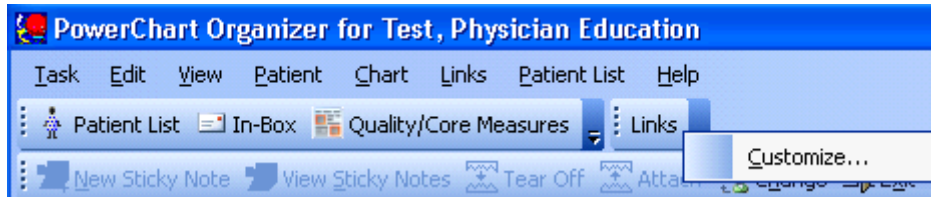


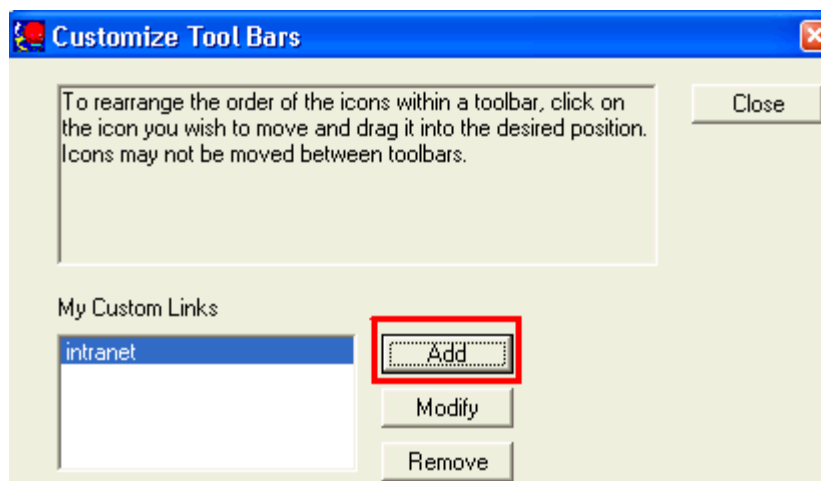
How to add a link to your tool bar in PowerChart

This function is performed at the individual user level.

Inside PowerChart locate the "Links" function icon on the Toolbar and use a **Right Click** to bring up "Customize";

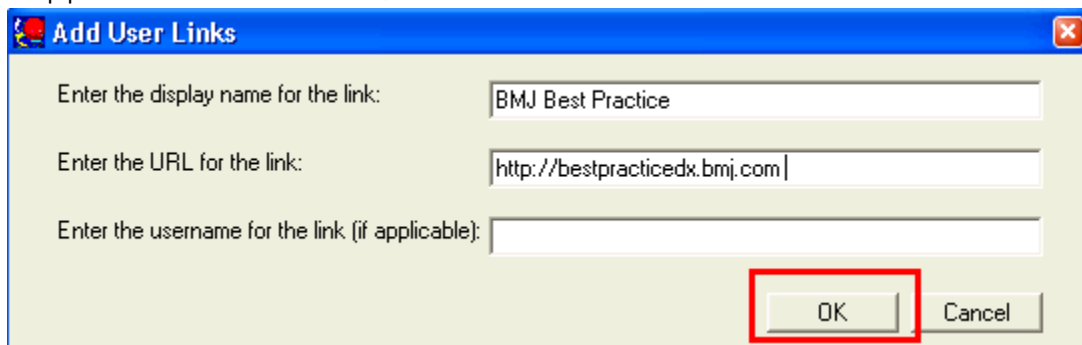


Left Click on "Customize" to bring up "Customize Tool Bars" Screen:



Left Click on "Add":

In the space supplied for the link name, enter what best identifies the link to the end-user.



In the space for the URL link, copy and paste the URL link of interest.

For BMJ Best Practice site: bestpracticedx.bmj.com

For BMJ Clinical Evidence site: clinicalevidence.bmj.com

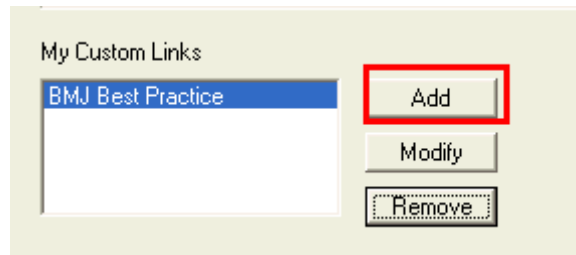
For PubMed site: ncbi.nlm.nih.gov/pmc/

From Tricitymed.org you can access any of these links

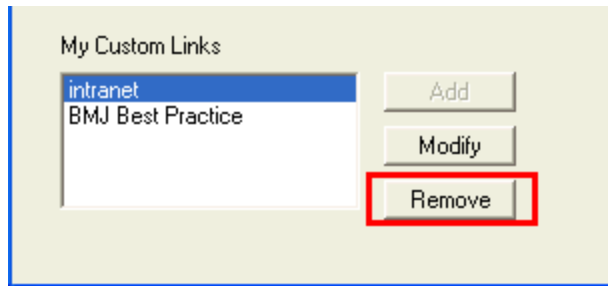
For Tri City Medical Website Physician page: tricitymed.org/physicians/physicians.aspx

When finished select "OK"

You can add a second link by selecting add again and repeating the above steps.



After you add the a second link the add button will no longer be available to add additional links.



You can change your links by highlighting a link and selecting remove and then adding a new link.

Below is an example of what a customized link might look like



Selecting this link opened to the ULR below

