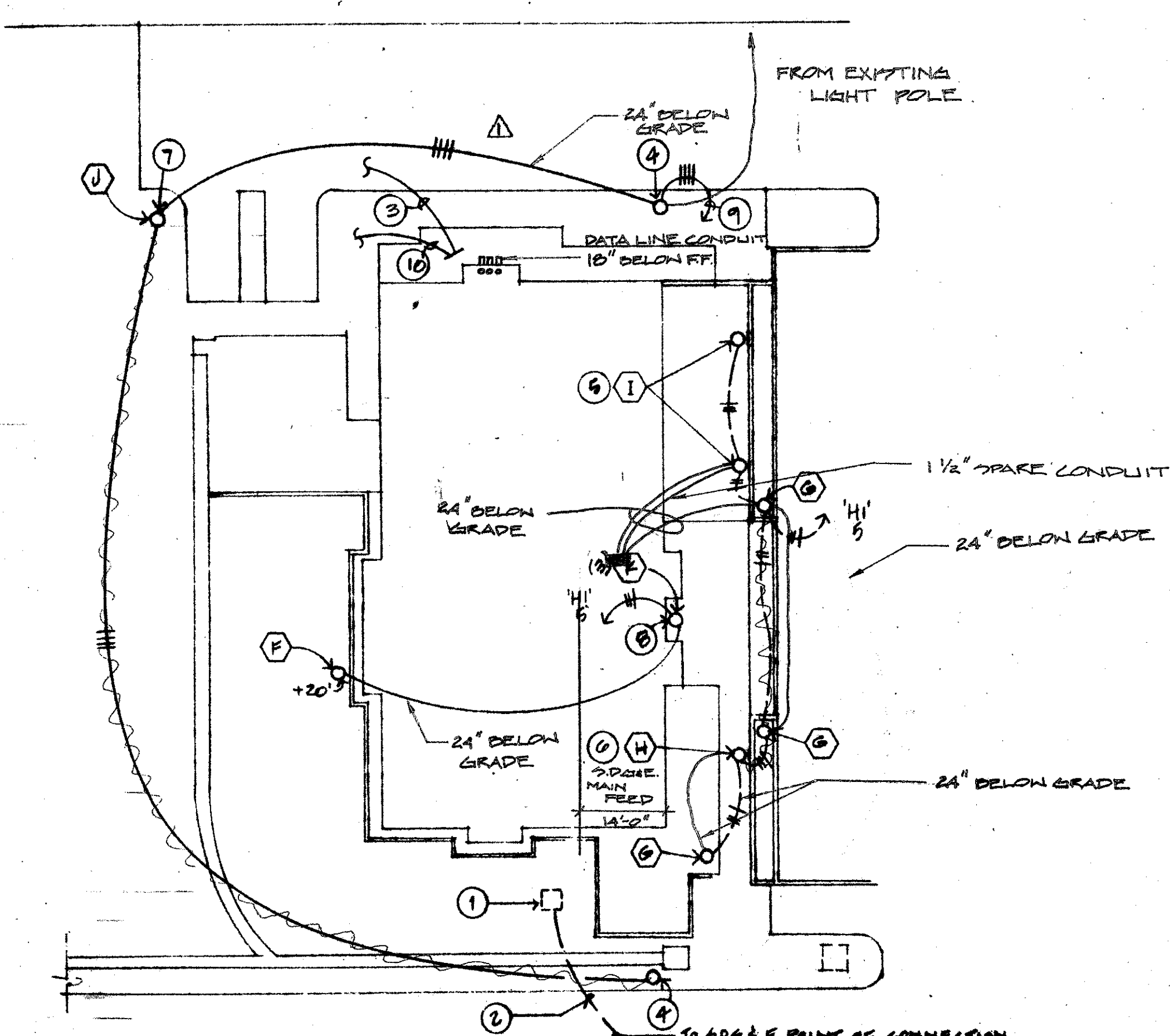


ALL DESIGN, MANAGEMENT AND PLANS INDICATED OR REPRESENTED BY THE DRAWING ARE OWNED BY AND THE PROPERTY OF THE AUSTIN HANSEN FEHLMAN GROUP. NO PART OF THIS DRAWING OR ANY INFORMATION CONTAINED HEREIN SHALL BE REPRODUCED OR TRANSMITTED IN ANY FORM OR BY ANY MEANS, ELECTRONIC OR MECHANICAL, INCLUDING PHOTOCOPYING, RECORDING, OR BY ANY INFORMATION STORAGE AND RETRIEVAL SYSTEM, WITHOUT THE WRITTEN PERMISSION OF THE AUSTIN HANSEN FEHLMAN GROUP.



### ELECTRICAL SITE PLAN

SCALE: 1" = 20'-0"



#### GENERAL NOTES

1. ALL EXTERIOR WIRING TO 2" x 10", 1" x 10" GND, 1" x 6" U.G.P.

#### REFERENCE NOTES

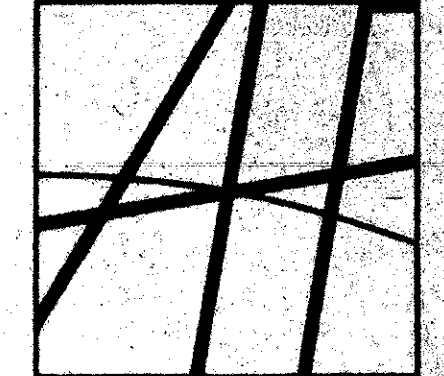
1. APPROXIMATE LOCATION OF G.R.G. & PAD MOUNT TRANSFORMER. VERIFY WITH G.R.G. & E. DESIGN DRAWINGS.
2. COORDINATE ALL UTILITY COMPANY REQUIREMENTS, ROUTING, INSTALLATION AND FINAL POINT OF CONNECTION WITH THE RESPECTIVE UTILITY COMPANY.
3. (2) 4" PVC SCHEDULE 40 CONDUITS FOR FUTURE USE FROM MAIN TELEPHONE BACKBOARD TO A POINT FIVE FEET OUTSIDE OF THE BUILDING. CAP CONDUITS & PROVIDE SURFACE MARKER.
4. RELOCATE EXISTING POLE AND LIGHT FROM EAST SIDE OF BUILDING. PROVIDE NEW CONCRETE BASE TO MATCH EXISTING FIXTURES. VERIFY NEW LOCATION AND EXISTING POLE.
5. MOUNT STEPLIGHTS TWO FEET ABOVE FINISH GRADE GRADE.
6. MOUNT STEPLIGHT TWO FEET ABOVE FINISH GRADE OR VERTICALLY CENTERED IN RETAINING WALL, WHICHEVER IS LEAST.
7. PROVIDE NEW CONCRETE BASE AT HEIGHT TO MATCH EXISTING FIXTURES. BASE SHALL BE 18" DIA. BURIED MINIMUM 36" BELOW GRADE, WITH 4" x 4" VERTICAL AND #3 HOOPS 12" OC. EXTEND BASE 2 FEET ABOVE GRADE TO MATCH EXISTING.
8. PROVIDE FIXTURE MOUNTED IN ARCHITECTURAL SPACE. COORDINATE WITH ARCHITECT. REFER TO ARCHITECTURAL DETAILS.
9. CONNECT TO EXISTING PACKING LOT LIGHTING CIRCUITS #1-3 FROM PANEL 'X' (400V/277V, 100A, 3P, 4W) IN ELECTRICAL SERVICE BLDG. EXISTING LOAD ON PANEL = 10,700W  
ADDITIONAL LOAD ON PANEL = 130W  
TOTAL LOAD = 10,910W  
= 20A, 400V, 3P
10. (1) 4" PVC SCHEDULE 40 CONDUIT FROM TELEPHONE BACKBOARD TO PADIC BELOW POINT OF CONNECTION. VERIFY EXACT ROUTING WITH UTILITY & CIVIL DRAWINGS.

#### GENERAL NOTES

1. ALL UNDERGROUND WIRING SHALL BE #10 CONDUCTORS IN 1" PVC SCHEDULE 40 CONDUIT, BURIED MINIMUM 24" BELOW GRADE. INCLUDE #10 INSULATED GROUND WIRE IN ALL UNDERGROUND LIGHTING CONDUITS.
2. STUB-UP ALL TELEPHONE & DATA CONDUITS 6" ABOVE FINISHED FLOOR IN TELEPHONE ROOM. ALL UNDERGROUND DATA & TELEPHONE CONDUITS SHALL BE BURIED MINIMUM OF 24" BELOW GRADE OR AS REQUIRED BY THE UTILITY.

### SYMBOL LEGEND

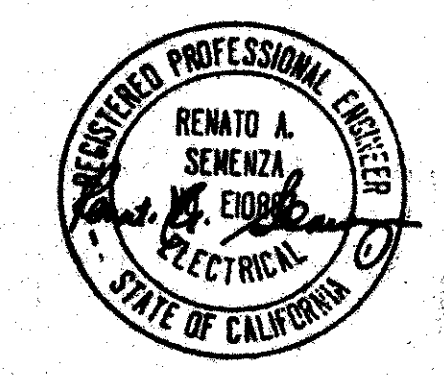
	FLUORESCENT LIGHTING FIXTURE, TYPE AS INDICATED
	DOWNLIGHT, SURFACE OR RECESSED MOUNTED, TYPE AS INDICATED
	LIGHTING FIXTURE ON NIGHT LIGHT CIRCUIT
	EXIT LIGHT FIXTURE
	LIGHT FIXTURE DESIGNATION
	DUPLEX RECEPTACLE, +12" ABOVE FINISH FLOOR LEVEL, UNLESS NOTED NEMA 5-20R, UNLESS OTHERWISE NOTED +40" INDICATES MOUNTING HEIGHT OTHER THAN +12"
	DOUBLE DUPLEX RECEPTACLE
	POWER RECEPTACLE - TYPE AS INDICATED
	JUNCTION BOX WITH COVER
	DISCONNECT SWITCH F = FUSED WP = NEMA 3R IN ALL WET OR EXTERIOR LOCATIONS
	LIGHTING/POWER PANEL
	CONDUIT HOMERUN WITH NUMBER OF CONDUCTORS PANEL DESIGNATION AND CIRCUITS INDICATED (EXAMPLE: A-1,3,5)
	CONDUIT/WIRING, CONCEALED IN WALL OR CEILING SPACE, HASH MARKS INDICATE NUMBER OF CONDUCTORS (EXCEPT GROUND CONDUCTORS)
	CONDUIT/WIRING, INSTALLED IN OR BELOW FLOOR SLAB
	CONDUIT/WIRING CONNECTED TO AN EMERGENCY CIRCUIT
	CONDUIT/WIRING, RUN EXPOSED
	CONDUIT - FLEXIBLE CONNECTION
	MOTOR OR MECHANICAL EQUIPMENT CONNECTION
	MECHANICAL EQUIPMENT DESIGNATION
	MANUAL MOTOR STARTER SWITCH WITH THERMAL OVERLOAD PROTECTION
	PANELBOARD DESIGNATION
	AMPS, AMPERES
	BARE COPPER
	CIRCUIT BREAKER
	CONDUIT
	CONDUIT ONLY WITH PULL LINE
	COPPER
	GROUND CONDUCTOR
	GROUND FAULT INTERRUPT PROTECTION
	MAIN CIRCUIT BREAKER
	MAIN LUGS ONLY
	MAXIMUM
	NATIONAL ELECTRICAL CODE (1984)
	TYPICAL
	UNLESS OTHERWISE NOTED
	VOLTS
	WEATHERPROOF



**AUSTIN HANSEN FEHLMAN GROUP**

ARCHITECTURE  
LAND PLANNING  
INTERIOR DESIGN

9605 SCRANTON RD.  
SUITE 202  
SAN DIEGO, CA 92121  
(619) 458-1361



TRICITY MEDICAL CENTER  
OFFICE / STORAGE BUILDING

POZZO CONSTRUCTION CO.

AUG 14 1989  
RECEIVED

DRAWN G.L.L.  
CHECKED P.E.A.

ISSUED  
BLDG. DEPT. SUBMITTAL  
9/12/88

BLDG. DEPT. 11/22/88  
BLDG. DEPT. 12/13/88  
BID SET 1/26/89  
2/14/89

ISSUED FOR CONST. 7/21/89

PROJECT NO.

SHEET TITLE  
SYMBOL LEGEND  
ELECTRICAL SITE PLAN

PROJECT: 85  
SUBMIT: 8/12/88  
REVIEWED FOR: [Signature]  
GENERAL CONFORMANCE TO PLANS AND SPECIFICATIONS  
BY: [Signature]  
POZZO CONSTR. CO. DATE

**Semenza Engineering**  
lighting - power - signal systems design  
2171 14th Street, Suite C  
San Diego, California 92104  
(619) 236-2223