

S F E I R
A R C H I T E C T S

5151 Shoreham Pl, Suite 265
San Diego, California 92122

P: 619-299-3917 F: 619-299-5084
Sfeirarch.com

September 23, 2022

TRI-CITY MEDICAL CENTER

TCMC EMERGENCY DEPARTMENT

4002 VISTA WAY
OCEANSIDE, CA 92056

SA # 02026.01

BID ADDENDUM NO. 3

General:

All Contractors submitting proposals for the above-named project shall take note of the following changes, additions, interpretations, clarifications, etc., in connection with the drawings and specifications and other general documents.

The following instructions have precedence over anything contrarily shown on the drawings or described in the specifications and shall be included in the contractor's bids.

Acknowledge receipt of this addendum by inserting its number and date in the space provided in the Bid Proposal.

Failure to do so may subject bidder to disqualification.

This addendum No. 3 consists of (20) page.

REQUEST FOR BIDS:

Item No. 1 - REQUEST FOR BIDS

DELETE:

BID ALTERNATES dated 8/9/22

ADD:

ADD attached BID ALTERNATES dated 8/9/22 (BID 002 ADDENDUM 9/15/22).

PROJECT MANUAL:

No IETMS.

DRAWINGS:

- Item No. 1 - P 002
DEB BID 002 RFI 002: "Please provide readable version of sheet P002 for the plumbing fixtures and equipment schedule".

Answer: "Will be issued in post-bid addendum"
- Item No. 2 - A4-10
DEB BID 002 RFI 008: Per general plan note 16 /A4.10, please confirm if placement of leveling compound can be addressed as an allowance due to unknown extent of existing conditions at time of bid. If so, please advise how much should be carried.

Answer: "No, placement leveling compound as shown on the construction drawings, also see bid alternate 006".
- Item No. 2 - A4-40
DEB BID 002 RFI 010: Please confirm intent is for General Contractor to include manhours to complete overall installation of OFCI materials noted on the equipment schedule per plan sheet A4.40.

Answer: "Confirmed".
- Item No. 3 - E1-00
DEB BID 002 RFI 011: Per note, 1/E100, please verify if existing branch circuitry has dedicated neutral currently in place. Also, please confirm if the installation of dedicated neutral should be carried as an add alternate.

Answer: "Will be issued in post-bid addendum".

GENERAL

- Item No. 1 - MEDICAL GASES SHUT OFF VALVE:
DEB BID 002 RFI 001: "Please confirm adequate shut off valves for medical gas is currently installed. If not, please confirm if contractor should carry a \$5,000 allowance to address potential shut off valves that may need to be added.

Answer: "Will be issued in post-bid addendum".

- Item No. 2 - TEMPORARY POWER:
DEB BID 002 RFI 003: "Please confirm if temporary construction power will be provided by the facility".

Answer: "Construction power will be provided by TCMC, GC to coordinate with TCMC power availability and location".

- Item No. 3 - SIGNAGE:
Deb BID 002 RFI 004: "Please provide confirm if there is a proprietary vendor information for signage".

Answer:" Rouse Sign 760-726-2070".

- Item No. 4 - MEDICAL GASES RECERTIFICATION:
DEB BID 002 RFI 005:" Please confirm contractor is to carry costs and manpower for the recertification of existing medical gas as part of scope of work".

Answer:" Will be issued in post-bid addendum".

- Item No. 5 - SIEMIC ANCHORAGE:
DEB BID RFI 006:" Per General plan note 17 – Please confirm seismic anchoring of existing conditions can be carried as an allowance as unforeseen conditions. If so, please advise how much should be carried".

Answer:" Refer to BID ALTERNATES".

- Item No. 6 - MORTAR
DEB BID 002 RFI 007:" Please confirm the depth and location of mortar bed we are to assume will need to be removed as part of the demolition process".

TCMC: "1-1/2" "
- Item No. 7 - CFCI CUT SHEETS
DEB BID 002 RFI 009:" Please provide specs for materials noted on equipment schedule to be CFCI".

Answer: "See attached cut sheets".
- Item No. 8 - LIGHT FIXTURES:
DEB BID 002 RFI 0012: "Light fixture schedule indicates fixture type F1/H1 which will require direct power connections. However, lighting plans do not reference locations and/or circuitry. Please confirm design intent.".

Answer: "Will be issued in post-bid addendum".
- Item No. 9 - BID 001 ADDENDUM 002:
DEB BID 002 RFI 13: "Please confirm if all alternates in Addendum #2 are still applicable.
DEB Construction, LLC".

Answer:" See attached revised Bid Alternates".
- Item No. 10 - BID 2 PHASES:
DEB BID 002RFI 14: "Please confirm contractor is to bid project as 2 phases with an anticipated construction schedule of 230 business days.".

Answer:" Confirmed, in addition see revised BID alternates in this addendum for one phase construction".

Item No. 11 - ELECTRICAL PANEL:
DEB BID 002 RFI 15:" Please provide photos of the existing panels 1B1, EC1B, EL1A, 1B1, and existing Motor Control Center EMCCR including surrounding location, the make and model, all breaker types with AIC ratings, the panel schedule and all labels".

Answer:" Bidders shall visit the site and examine the existing conditions".

Item No. 12 - VE-PHASING:
DEB BID 002 RFI 16:" Please confirm it is acceptable to provide a list of value engineering options with bid submission documents. If so, please confirm it is acceptable for contractor to provide alternate for phasing to be reduced to a single phase".

Answer:" Value engineering options can be listed in a separate document in addition to the base bid. As far phasing, see revised BID ALTERNATES".

Item No. 13 - TRAILERS:
DEB BID 002 RFI 17:" Please confirm the general contractor will not be responsible for any scope related to the potential install of the temporary trailer outside of the emergency room, as noted during project job walk.".

Answer:" Confirmed".

Item No. 14 - SEISMIC BRACING:
DEB BID 002 RFI 18:" Please confirm general contractor requirements for submission of deferred approval in regards to the MEP Seismic Bracing submittal".

Answer:" See HCAI approved construction drawings".

Item No. 15 - COLD WATER INSULATION:
DEB BID 002 RFI 19:" Please confirm if the insulation of cold-water piping is required".

Answer:" Will be issued in post-bid addendum".

Item No. 16 - LOW VOLTAGE:
DEB BID 002 RFI 20:" Please confirm if general contractor is responsible for all scope related to low voltage or if the facility will contract the preferred vendor directly".

Answer:" Confirmed, yes".

Item No. 17 - PAINT COLOR:
DEB BID 002 RFI 21:" It is our understanding that Tri City Medical Center standard color for the doors is considered a custom color with a long lead time. Please confirm design intention for new doors".

Answer:" Refer to HCAI approved construction drawings".

Item No. 17 - TIO:
DEB BID 002 RFI 022:" Please provide approved copy of TIO".

TCMC:" See attached".

Item No. 18 - PANELS PHOTOGRAPHS:
DEB BID 002 RFI 23:" Please provide photographs of existing panels schedules listed on construction documents noted to remain in place".

Answer:" Refer to construction documents".

END OF ADDENDUM

BID ALTERNATES

ADDITIONAL TERMS AND CONDITIONS:

8/9/22

(BID 002 ADDENDUM 001 9/15/22)

The following BID ALTERNATES are added to the agreement. All allowances submitted in the BID are deleted from this agreement. All Bid Alternates will be executed on as needed basis. If needed, Contractor shall submit cost broken down in labor and material to owner for review and approval before commencing work on any of the following Alternates.

BID ALTERNATE 001:

Concrete sealer per BID construction drawing A0-00 note 24 is:

Guaranteed Maximum Price of \$1.47 per square foot.

BID ALTERNATE 002:

Guaranteed Maximum Price of \$50,000.00 to cover the following:

1. Trace, relocate and anchor existing infrastructure and associated material if any to include but not limited to:
 - a. Mechanical ductwork.
 - b. Plumbing lines.
 - c. Electrical conduits.
 - d. Low voltage lines.
 - e. Existing Exam Lights.

BID ALTERNATE 003:

Fire Watch daily fee is \$615.00 per 16 hours.

BID ALTYERNATE 004:

Remove and dispose of, replace unsuitable excavated soil with new soil, soil compaction included, cost is as follow:

1. \$233.75/ per cubic yard.

BID ALTERNATE 005:

Remove and dispose of, replace unsuitable excavated soil with new concrete slurry to be specified by the Structural Engineer of Record, cost is as follow:

1. \$316.25/ per cubic yard.

BID ALTERNATE 006:

Concrete sealer per BID construction drawing A4-10 General Note 16.

Check field levelness conditions per the construction drawing. If the conditions required per construction drawing cannot be achieved, allow for a Guaranteed Maximum Price of \$500.00 per door.

BID ALTERNATE 007:

Delete all construction phases and construct the project in one phase, except toilet 244 and med prep 241 will constitute PHASE II.

ADDITIONAL TERMS AND CONDITIONS:

- 1- Contractor will start pre-construction services prior to start of construction to be performed within 230 business days at no additional cost to the owner. These pre-construction services will be 40 business days and will include but not limited to:
 - a. Procurement of long lead construction materials.
 - b. Submittals including Shop drawings and specifications.
 - c. Existing infrastructure anchorage shop drawings.

After all of the above is identified, the Contractor will produce a construction schedule for review and approval by owner.

- 2- Contractor shall submit subcontractors' documents as follows prior to signing the contract:
 - a. DIR registrations.
- 3- Contractor is confirming in the Bid that all long lead items have been accounted for in the schedule.

ergotron[®]

moving you forward

LX Sit-Stand Wall Mount System & LX Wall Mount System

- 20" of height adjustment with full tilt/pan lets you work sitting or standing
- Back-tilt keyboard tray protects wrists from pain or injury
- Folds within inches of the wall when not in use
- Offers 33" of screen extension and 42" of keyboard tray extension
- Just loosen the screws to change the arm location on the Wall Track
- Built for thousands of movements by passing 10,000-cycle test
- Includes 10-year warranty



ULTIMATE FUNCTIONALITY IN A COMPLETE
AND COMPACT WALL MOUNT SYSTEM!



Ergotron's LX Wall Mount Systems offer healthcare professionals a fully integrated solution that accommodates a monitor, keyboard and CPU—all on a single, secure wall track. The two independent arms adjust effortlessly so caregivers can experience ergonomic comfort while viewing and entering data. Most important, its total flexibility helps enhance personal interaction between caregivers and their patients.

When not in use, the entire system folds up tight—just inches from the wall—making it ideal for tight spaces or areas with high traffic. Our sit-stand model provides added height adjustment, so users can choose to sit and stand throughout the day for a healthier way to work.

LX Sit-Stand Wall Mount System & LX Wall Mount System



Medium CPU Holder size range is 2–8" (5–20 cm) wide; includes plastic spacer to accommodate most small form factor and ultra-small form factor CPUs

Small CPU Holder size range is 1.325"–3.75" (3,5–9,5 cm) wide; accommodates most small form factor and ultra-small form factor CPUs



LX Sit-Stand Wall Mount System: Keyboard folds to within 6.8" (17,3 cm) of wall in storage position; LCD arm folds back to a depth of 5.5" (14 cm)

LX Wall Mount Systems: Keyboard folds to within 3.5" (9 cm) of wall in storage position; LCD arm folds back to a depth of 5.3" (13 cm)



INTEGRATED CABLE MANAGEMENT AND CABLE CHANNELS ORGANIZE AND ROUTE CORDS OUT OF SIGHT



LX Sit-Stand Wall Mount System



LX Wall Mount System



LX Wall Mount System, White

Part # (color)	Includes medium CPU Holder (silver) 45-358-026 (polished aluminum) Includes small CPU Holder (black) 45-359-026 (polished aluminum)	Includes medium CPU Holder (silver) 45-247-026 (polished aluminum) Includes small CPU Holder (black) 45-253-026 (polished aluminum)	Does not include a CPU Holder 45-551-216 (white) White CPU Holder ordered separately: Thin Client Mount: 80-107-216 Small CPU Holder: 80-063-216 Vertical Universal CPU Holder: 97-468-216
Typical LCD Size	≤ 42"	≤ 32"	≤ 32"
LCD SIZE IS APPROXIMATION. DIMENSION IS DIAGONAL MEASUREMENT OF SCREEN. LCD SIZE MAY BE EXCEEDED AS LONG AS SCREEN WEIGHT DOES NOT EXCEED MAXIMUM WEIGHT CAPACITY OF THE MOUNT.			
Weight Capacity	≤ 7–25 lbs (3,2–11,3 kg) See website for details	≤ 5–25 lbs (2,3–11,3 kg) See website for details	≤ 7–25 lbs (3,2–11,3 kg) See website for details
Lift	20" (50,8 cm)	13" (33 cm)	13" (33 cm) See website for details
Tilt	75° ↑ 70° / ↓ 5°	75°	75°
Pan	360° See website for details	360°	180°
Rotation	360°	360°	90°
VESA	MIS-D/E/F See website for details	MIS-D	MIS-D
Product Weight	39 lbs (17,8 kg)	30.7 lbs (14 kg)	24.9 lbs (11,3 kg)
Shipping Dimensions	36.4" x 22.3" x 6.8" (93 x 57 x 17 cm)	37" x 22" x 7.5" (94 x 56 x 19 cm)	36.3" x 6.3" x 18.5" (92 x 16 x 47 cm)
Shipping Weight	47.3 lbs (21,5 kg)	40 lbs (18 kg)	29.3 lbs (13,3 kg)
Warranty	10 years		

Download additional resources at ergotron.com.

For more information:

USA & Canada: 800.888.8458 / +1.651.681.7600 / insidesales@ergotron.com

EMEA: +31.33.45.45.600 / info.eu@ergotron.com

APAC: apaccustomerservice@ergotron.com

LATAM Sales: Mexico / +1.800.681.1820 / info.latam@ergotron.com

Custom: custom@ergotron.com

© Ergotron, Inc. 05.05.2021

Literature made in the U.S.A. Content subject to change.

Ergotron devices are not intended to cure, treat, mitigate or prevent any disease.

Patent information available at www.ergotron.com/patents.

WorkFit, StyleView, LearnFit, Neo-Flex, PowerShuttle, LiFeKinnex, CareFit

and eKinnex are trademarks of Ergotron.



ergotron®

moving you forward

Mini PC Mount

- Includes hardware for multiple attachment options to surfaces and Ergotron mounts
- Size-adjustable holder fits a wide range of small computers, including all generations of the Apple® Mac mini
- Creates a complete workstation by adding a small computer to a display mount
- Saves space with a universal VESA interface that attaches to any VESA mount with a 100 mm or 75 mm hole pattern
- Steel construction
- Includes a 5-year warranty



POSITION YOUR MICROSOFT® SURFACE™ OR TABLET WITHIN YOUR DIGITAL WORKFLOW

This versatile holder easily incorporates a mini PC or small computer into your workspace. The universal design adapts to the dimensions of each device, and the mounting interface attaches to a variety of surfaces like a VESA plate, directly to your desk, clamped to a pole or fastened to an Ergotron Wall Track for a low-profile option.

Mini PC Mount

Mounting options:

- VESA mount between the monitor and VESA plate
- Pole with diameter of 1.38" to 1.58" (35 to 40 mm); poles used in LX arm and DS100 configurations
- Under desktop to a wood surface
- Ergotron Wall Track

Weight capacity:

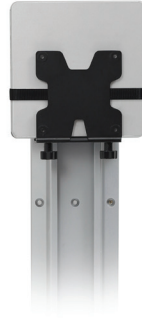
- Mini PC ≤ 6 lbs (2,7 kg)
- Monitor ≤ 18 lbs (8,2 kg) if attached with a VESA mount interface

Allowable mini PC or CPU dimensions:

- Depth = 0.85" to 23" (2,2 to 5,8 cm)
- Height = 6.8" to 10" (17,3 to 25,4 cm)
- Width = 4" to 9" (10,2 to 22,9 cm)

Mounting standard:

- VESA FDMI, MIS-D, 75/100, C
hole pattern = 100 x 100 cm & 75 x 75 cm



Part # (color)	80-107-200 (black) 80-107-216 (white)
Weight Capacity	Mini PC ≤ 6 lbs (2,7 kg) See website for details
VESA	MIS-D See website for details
Product Weight	1.5 lbs (0,7 kg)
Shipping Dimensions	6" x 7" x 4.25" (15 x 18 x 11 cm)
Shipping Weight	2 lbs (0,9 kg)
Warranty	5 years



INCLUDED MOUNTING PADS AND STRAP INCREASE STABILITY

Download additional resources at ergotron.com.

For more information:

Americas: 800.888.8458 / +1.651.681.7600 / insidesales@ergotron.com

EMEA: +31.33.45.45.600 / info.eu@ergotron.com

APAC: apaccustomerservice@ergotron.com

Custom: custom@ergotron.com

© Ergotron, Inc. 03.29.2020

Literature made in the U.S.A. Content subject to change.

Ergotron devices are not intended to cure, treat, mitigate or prevent any disease.

Patent information available at www.ergotron.com/patents.

WorkFit, StyleView, LearnFit, Neo-Flex, PowerShuttle, LiFeKinnex, CareFit and eKinnex are trademarks of Ergotron.



Testing, Inspection, and Observation Program
2019 California Building Standards Code - OSHPD 1

This program is prepared and submitted for an OSHPD 1 project. OSHPD 1 projects include all construction and remodel projects for: general acute care hospitals, acute psychiatric hospitals, and general acute care hospitals providing only acute medical rehabilitation center services.

SECTION A		PROJECT INFORMATION	
Facility #:	Facility Name:	Project #:	Sub #:
12372	Tri-City Medical Center	S211516-37-00	
Street Address:	4002 Vista Way		
City:	Oceanside	County:	San Diego
Record Name (Scope of Project):	TCMC ED		
Abbreviations:			
CAC: California Administrative Code		AAMA: American Architectural Manufacturers Association	
CBC: California Building Code		NFPA: National Fire Protection Association	
CEC: California Electrical Code		FM: FM Approval Standards	
CMC: California Mechanical Code		DPOR: Design Professional of Record	
CPC: California Plumbing Code		Version: R03.7.5	

DESIGN PROFESSIONAL OF RECORD RESPONSIBILITY

The administration of the work of construction, including this TIO, shall be under the responsible charge of an architect and structural engineer. When a structural engineer is not substantially involved, the architect shall be solely responsible. Where neither structural nor architectural elements are substantially involved, a mechanical or electrical engineer registered in the branch of engineering most applicable to the project may be in responsible charge. (CAC 7-141(a))

Note: OSHPD plan review staff must provide verification that the TIO program has been "Reviewed" prior to plan approval to confirm the applicability of the tests and inspections identified in the TIO program for work scope, building systems, and the construction materials shown in the design drawings. Field staff will issue subsequent "TIO Program Approval".

The "TIO Program Approval" from OSHPD field staff must be obtained and included with the notice of start of construction required by CAC Section 7-137(a)4) and 7-145(a)5.A)

Construction shall not commence until the health facility has obtained from OSHPD "TIO Program Approval". (CAC Section 7-135(a)3)

Testing, Inspection, and Observation Program
2019 California Building Standards Code - OSHPD 1

SECTION B		NOTE: Approved agencies, individuals, and all changes to the TIO program shall be identified, evaluated by the DPOR and approved by OSHPD prior to proceeding with the related work.					
Facility #:		Facility Name:		Project #:			
12372		Tri-City Medical Center		S211516-37-00			
				Select one of the two following options with "X":			
Index #	REQUIRED (Select with "X")	TESTS	Samples of test & inspection reports included	OPAA	RESPONSIBLE APPROVED AGENCY AND/OR INDIVIDUAL	COMPLIANCE VERIFICATION BY IOR (Initial/Date)	OSHPD/FDD USE (Initial/Date)
STRUCTURAL TESTS							
Concrete							
B-C1	X	Concrete CBC 1705A.3, 1903A.6 & 1910A.1; ACI-318 1.9.1 & 26.4 Cementitious materials					
B-C2	X	Concrete CBC 1705A.3, 1903A.5; ACI-318 1.9.1 & 26.4 Aggregates/Reactive aggregates					
B-C3	X	Concrete CBC 1705A.3, ACI-318 26.4.1.3, ASTM C1602 Water					
B-C4	X	Concrete CBC 1705A.3 & 1905A.1.15; ACI-318 26.12 Strength test					
B-C5	X	Concrete CBC 1705A.3 & 1910A.2 & ACI-318 20.2, 25.4.5.1 & 26.6.1.2 Metal reinforcement (including welded wire fabric and headed rebar)					
B-C14	X	Post-installed anchors CBC 1910A.5 Installation verification test (includes adhesive, shot pins and mechanical anchors)					
Steel							
B-S1	X	Steel CBC 2202A.1 Identification test for structural steel and cold formed steel					
Nonstructural Components, Supports and Attachments							
B-N2	X	Special Seismic Certification CBC 1705A.13.3 Shake Table test					
ELECTRICAL TESTS							
B-E4	X	Grounding system in patient care spaces 2018 NFPA 99 6.3.3.1					
B-E7	X	Insulation Testing CEC 110.7, 2018 NFPA 99 6.7.4.1.2.2					
B-E15	X	Nurse call system CEC 517.123					
MECHANICAL TESTS							
B-ME7	X	Hydronics CMC 1205.2, 1220.2.6 & 1221.3 Pressure test of steam and water piping					
B-ME9	X	Existing System Air Balance CMC 407.3 Pre-demolition Air Flow Test and Report					
B-ME10	X	Existing System Air Balance CMC 407.3 Post-demolition Air Flow Test and Report					

Testing, Inspection, and Observation Program
2019 California Building Standards Code - OSHPD 1

SECTION B		NOTE: Approved agencies, individuals, and all changes to the TIO program shall be identified, evaluated by the DPOR and approved by OSHPD prior to proceeding with the related work.					
Facility #:		Facility Name:		Project #:			
12372		Tri-City Medical Center		S211516-37-00			
		Select one of the two following options with "X":					
Index #	REQUIRED (Select with "X")	TESTS	Samples of test & inspection reports included	OPAA	RESPONSIBLE APPROVED AGENCY AND/OR INDIVIDUAL	COMPLIANCE VERIFICATION BY IOR (Initial/Date)	OSHPD/FDD USE (Initial/Date)
B-ME11	X	Ventilation system CMC 407.3.1 & Table 4-A Areas tested and balanced					
PLUMBING TESTS							
B-P1	X	Disinfection of potable water systems CPC 609.9					
B-P2	X	Medical gas and vacuum NFPA 99-2018 § 5.1.12 Gas and vacuum system performance testing					
B-P3	X	Medical gas and vacuum NFPA 99-2018 § 5.1.12 Gas and vacuum system verification testing					
B-P4	X	Existing sewers and drains CPC 102.4.1, 105.3 & 712.0 Tested for conformance with requirements for new work					
B-P5	X	Water supply system CPC 105.3 & 609.4 Pressure tested prior to covering or concealment					
B-P6	X	Plumbing, drainage, and venting systems CPC 105.3 & 712.0 Water or air tested prior to use, covering or concealment					
B-P16	X	Backflow prevention devices and assemblies CPC 603.2 & 603.4.2 Assembly tested					
FIRE PROTECTION EQUIPMENT TESTS							
B-FP1	X	Fire Alarm CFC 901.5 & CFC 907.7 NFPA 72-2016 §14.4 Acceptance and Reacceptance Testing					
B-FP2	X	Fire and smoke dampers CFC 901.5 & CFC 907.8 Acceptance testing					

Testing, Inspection, and Observation Program
2019 California Building Standards Code - OSHPD 1

SECTION C		NOTE: Approved agencies, individuals, and all changes to the TIO program shall be identified, evaluated by the DPOR and approved by OSHPD prior to proceeding with the related work.					
Facility #:	Facility Name:	Project #:		Sub #:			
12372	Tri-City Medical Center	S211516-37-00		0			
		Select one of the two following options with "X":					
Index #	REQUIRED (Select with "X")	ON-SITE SPECIAL INSPECTIONS	Samples of test & inspection reports included	OPAA	RESPONSIBLE APPROVED AGENCY AND/OR INDIVIDUAL (IDENTIFY SPECIAL INSPECTOR)	COMPLIANCE VERIFICATION BY IOR (Initial/Date)	OSHPD/FDD USE (Initial/Date)

STRUCTURAL SPECIAL INSPECTIONS

Concrete

C-C1	X	Concrete CBC 1705A.3; ACI-318 26.5.2 & 26.13 Placement of concrete					
C-C2	X	Concrete CBC 1705A.3; ACI-318 26.4.1.5 Admixtures					
C-C3	X	Concrete CBC 1705A.3; ACI-318 26.4 Mix Design					
C-C4	X	Concrete CBC 1705A.3; ACI-318 26.13 Reinforcing steel & prestressing steel					
C-C5	X	Concrete CBC 1705A.3 CIP & Post-installed anchors					

Steel

C-S1	X	Steel CBC 1705A.2 & 1705A.12.1 Steel shop fabrication					
C-S3	X	Steel CBC 1705A.2.5 & 1705A.12.1 Shop and field welding					
C-S4	X	Steel AWS D1.1 3 & 4 and AWS D1.8 6.1 Shop and field welding - WPS / WPQR					

Nonstructural components, supports and attachments

C-N1	X	Architectural components CBC 1705A.12.5 & 1705A.16 Cladding, nonbearing walls and veneer					
C-N2	X	Ceiling CBC 1705A.12.5 Suspended ceiling systems and their anchorage					
C-N6	X	Special Seismic Certification CBC 1705A.12.4 Special Seismic Certification label, anchorage and mounting					
C-E2	X	Receptacle polarity and torques electrical connection on TIO. [Title 24, Part 1, 7-141]					

FIRE PROTECTION SPECIAL INSPECTIONS

C-FP1	X	Sprayed fire-resistant materials CBC 1705A.14 Spray-applied fireproofing					
C-FP3	X	Penetration firestops CBC 1705.17.1 & 1705A.17.1 Penetration firestop systems that are tested and listed					

Testing, Inspection, and Observation Program
2019 California Building Standards Code - OSHPD 1

SECTION F		CONSTRUCTION VERIFICATION											
Facility #:	Facility Name:							Project #:			Sub #:		
12372	Tri-City Medical Center							S211516-37-00					
VERIFIED CONSTRUCTION INSPECTION AND OBSERVATION REPORTING													
REFERENCE NUMBER	PROJECT MILESTONE OR INTERVAL	VERIFIED COMPLIANCE REPORT REQUIRED AS INDICATED (Form OSH-FD-123) (See "PERSONAL KNOWLEDGE" as defined in California Administrative Code, Section 7-151)										FOR OSHPD USE ONLY	
		GEOR	AOR	SEOR	MEOR	EEOR	CONT	IOR	SP INSP	TEST LAB	OSHPD FDD		
	Clear all plan review Outstanding Items List (OIL) Items		X	X	X	X	X	X	X				
	Installation of temporary equipment												
	Removal of temporary equipment												
	Substantial Compliance (Remodel, Renovations, Maintenance projects, Equipment Replacement)												
	Certificate of Occupancy (New Buildings, Additions, Changes in Occupancy)												
	Construction Final		X	X	X	X	X	X	X				
ABBREVIATIONS:		GEOR - Geotechnical Engineer of Record			AOR - Architect of Record			SEOR - Structural Engineer of Record					
		MEOR - Mechanical Engineer of Record			EEOR - Electrical Engineer of Record			CONT O/B - Contractor or Owner/Builder					
		SP. INSP - Special Inspector			IOR - Inspector of Record			Test Lab – Engr. For the approved agency					

Testing, Inspection, and Observation Program
2019 California Building Standards Code - OSHPD 1

SECTION H	OSHPD REVIEWED		
Facility #:	Facility Name:	Project #:	Sub #:
12372	Tri-City Medical Center	S211516-37-00	

NOTE: When a structural engineer has been delegated responsibility for a portion of this project his or her signature is also required. For testing, Inspection and Observation Program Instructions visit: <https://oshpd.ca.gov/construction-finance/resources/forms-applications-reminder-lists/#TIO>

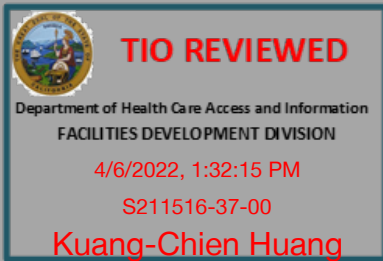
Submitted By:

I have reviewed the approved construction documents for this project and all tests and special inspections required by Code are marked as "required" on this form.

Joseph Sfeir		8/8/2021
Architect/Engineer of Record (Print Name)	Architect/Engineer of Record (Signature)	Date
Changhua Sun		8/5/2021
Structural Engineer of Record (Print Name)	Structural Engineer of Record (Signature)	Date

FOR OSHPD USE

Reviewed:



Signature _____ Date _____

<input checked="" type="checkbox"/>	<input type="checkbox"/>
REVIEWED	REVIEWED WITH COMMENTS

Note: OSHPD plan review staff must provide verification that the TIO program has been "Reviewed" prior to plan approval to confirm the applicability of the tests and inspections identified in the TIO program for work scope, building systems, and the construction materials shown in the design drawings. Field staff will issue subsequent "TIO Program Approval".

Testing, Inspection, and Observation Program
2019 California Building Standards Code - OSHPD 1

SECTION I	BUILDING PERMIT APPROVAL		
Facility #:	Facility Name:	Project #:	Sub #:
12372	Tri-City Medical Center	S211516-37-00	
<p align="center">NOTE: For testing, Inspection and Observation Program Instructions visit: www.oshpd.ca.gov</p> <p>This program has been prepared and submitted for an OSHPD 1 project. OSHPD 1 projects include all construction and remodel projects for general acute care hospitals and acute psychiatric hospitals.</p> <p>Samples of Test and Inspection Reports are: (NOT required for test performed by laboratories approved through OPAA Program)</p> <p><i>All test and special inspection reports shall be submitted to the IOR, hospital owner, architect in responsible charge, and the structural engineer by the testing agency per CAC 7-149(a).</i></p> <p><i>Verified compliance reports shall be signed by the individual who performed the special inspection(s) as outlined in CAC 7-151 (c). All reports shall clearly state whether the tests or special inspections were performed in accordance with the OSHPD stamped approved documents and whether the results indicate compliance with those documents per CAC 7-149 (a). All IORs performing special inspections shall hold the appropriate certification and equipment and shall obtain approval from the design professional of record and OSHPD prior to perform such work.</i></p> <p>NOTE: This Test Inspection and Observation Report shall be approved by OSHPD field personnel prior to start of construction.</p>			
Architect/Engineer of Record (Print Name)	Professional License #	Architect/Engineer of Record (Signature)	Date
FOR OSHPD FIELD STAFF USE			
TIO Program Approval:			
		<input type="checkbox"/> APPROVED <input type="checkbox"/> APPROVED WITH COMMENTS	
Signature	Date		
<p>Note: OSHPD plan review staff must provide verification that the TIO program has been "Reviewed" prior to plan approval to confirm the applicability of the tests and inspections identified in the TIO program for work scope, building systems, and the construction materials shown in the design drawings. OSHPD Field staff will issue subsequent "TIO Program Approval".</p> <p>If "Approved with Comments" is checked the following comments shall be resolved by the designer prior to proceeding with the related construction:</p>			

Testing, Inspection, and Observation Program
2019 California Building Standards Code - OSHPD 1

SECTION C		NOTE: Approved agencies, individuals, and all changes to the TIO program shall be identified, evaluated by the DPOR and approved by OSHPD prior to proceeding with the related work.					
Facility #:	Facility Name:	Project #:			Sub #:		
12372	Tri-City Medical Center	S211516-37-00			0		
		Select one of the two following options with "X":					
Index #	REQUIRED (Select with "X")	ON-SITE SPECIAL INSPECTIONS	Samples of test & inspection reports included	OPAA	RESPONSIBLE APPROVED AGENCY AND/OR INDIVIDUAL (IDENTIFY SPECIAL INSPECTOR)	COMPLIANCE VERIFICATION BY IOR (Initial/Date)	OSHPD/FDD USE (Initial/Date)
C-FP4	X	Fire-resistant joint systems CBC 1705.17.2 & 1705A.17.2 Fire-resistant joint systems that are tested and listed					
OTHER SPECIAL INSPECTIONS							
C-OT3	X	Signs and/or identification devices CBC 11B-703.1.1.2 Information, appearance, location and Braille					
C-OT4	X	Glass and glazing identification CBC 2403.1 Manufacturer's material mark inspection					